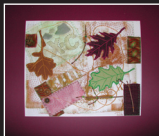
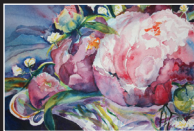
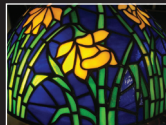


SOUTH
EAST

OF WA

ARTISTS'
STUDIO

TOUR





October 15th · 9AM to 4PM
& October 16th · 12 to 4PM

for more info visit the web at:
www.iowastudio.org

3rd annual Southeast Iowa Artists'
Studio Tour, a self-guided tour
in and around the communities
of Des Moines, Henry, Lee, and
Washington counties.